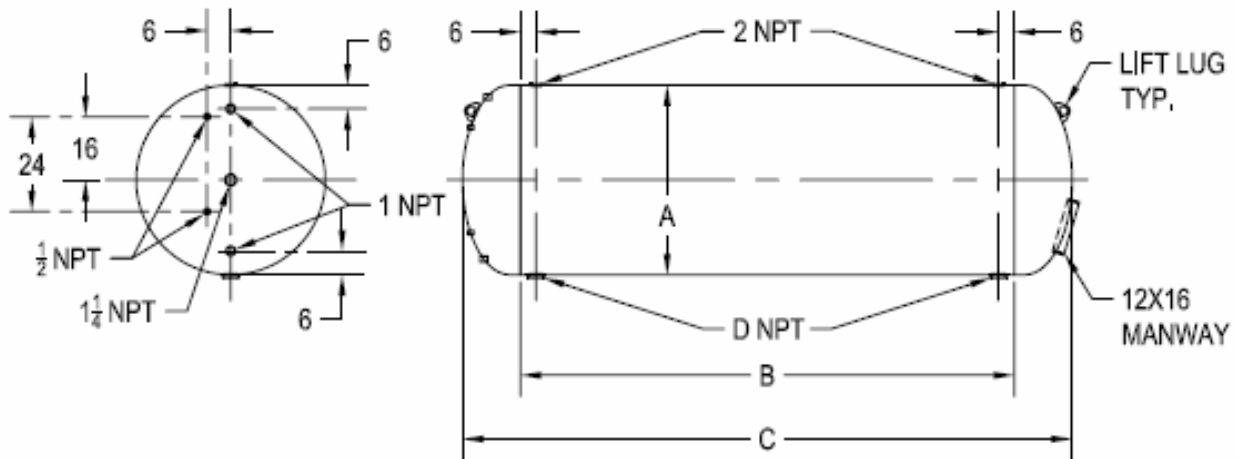


P.O.Box 338, Kendallville, IN 46755  
800-348-2514 Fax 800-348-1514

ASME CODE QUICK HORIZONTAL (QHTC) TANKS  
NSF/ANSI® STANDARD 61 CERTIFIED LINING  
100 PSIG WORKING PRESSURE



BELOW ARE DIMENSIONS FOR STANDARD TANK CAPACITIES.  
OTHER CONFIGURATIONS ARE AVAILABLE UPON REQUEST.

CRADLE DIMENSIONS VARY WITH TANK DIAMETER.  
NOTE: CRADLES ARE OPTIONAL AND *NOT* INCLUDED IN TANK PRICE.  
LINING: NSF/ANSI STANDARD 61 CERTIFIED EPOXY  
EXTERIOR: STANDARD EPOXY OR PRIMER.

MODEL NUMBER	GALLONS ACTUAL	- NOMINAL DIMENSIONS (INCHES) -				WEIGHT
		A	B	C	D	
QHTC1000	1078	48	120	150	3	1744
QHTC1500	1540	48	180	210	3	2387
QHTC2000	2096	48	252	282	4	3164
QHTC2500	2596	60	192	227	4	3397
QHTC3000	3174	60	240	275	4	4106
QHTC3500	3607	60	276	311	4	4547
QHTC4000	4219	72	216	257	4	5666
QHTC4500	4635	72	240	281	4	6148
QHTC5000	5258	72	276	317	4	6870
QHTC6000	6398	84	240	287	4	7387
QHTC7000	7246	84	276	232	4	8225
QHTC8000	8498	96	240	293	6	10651
QHTC9000	9239	96	264	317	6	11426
QHTC10000	10719	96	312	365	6	12957